

**The  
Battery  
Network**

# Collection Site Consideration

---

Prepared for Museum and Special Event Locations



# Agenda



- 1. IL Battery Stewardship Act**
- 2. The Battery Network**
- 3. How to become a collection site**
- 4. Training Materials**
- 5. Locator**
- 6. Marketing**
- 7. Q&A**



**Illinois**

**Public Act 103-1033**

**Signed August 9, 2024**

**Portable and Medium-Format  
Battery Stewardship Act**

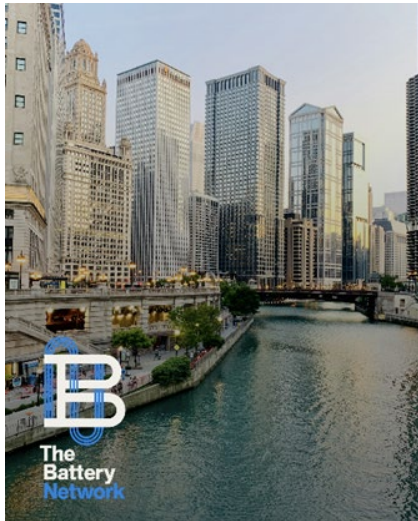
**Effective January 1, 2026**

# Highlights of the Legislation



- 🔋 All Battery Producers selling batteries in Illinois required to participate in the Plan
- 🔋 Illinois EPA oversees the Plan
- 🔋 The Plan covers recovery and recycling of all batteries included in the legislation
- 🔋 **The Battery Network's Plan approved by the Illinois EPA requires all batteries to be collected as 1/1/2026**
- 🔋 The Plan utilizes existing rechargeable battery collection sites, expanding them to include portable batteries (single-use)
- 🔋 The Plan expands collection sites on a voluntary basis to local government and additional businesses
- 🔋 The Battery Network provides training to collection sites and marketing assistance.
- 🔋 Rechargeable battery disposal ban federal law 1996
- 🔋 IL Single-use alkaline battery disposal ban 1/1/2028

 The Battery Network  
Recycle your batteries today, Illinois. It's free.



# Battery Chemistries



## Batteries we Recycle under Illinois EPR Law

### Ni-MH



**Type:** Rechargeable  
**Name on battery:** Ni-MH  
**Seal color:** Orange

### Nickel-Metal Hydride

Performs well in high drain devices and can be recharged up to 1,000 times.

**Products that may use or contain Nickel-Metal Hydride batteries:**



### Ni-Cd



**Type:** Rechargeable  
**Name on battery:** Ni-Cd  
**Seal color:** Green

### Nickel Cadmium

Can be recharged up to 1,000 times and contains Cadmium, which can be toxic to the environment and should be recycled.

**Products that may use or contain Nickel Cadmium batteries:**



### SSLA/Pb



**Type:** Rechargeable  
**Name on battery:** SSLA/Pb  
**Seal color:** Gray

### Small Sealed Lead Acid

Simple to manufacture and have one of the lowest discharge rates of any rechargeable battery.

**Products that may use or contain Small Sealed Lead Acid batteries:**





# Battery Chemistries

## Batteries we Recycle under Illinois EPR Law

### Primary



**Type:** Non-Rechargeable  
**Name on battery:** alkaline, lithium, zinc-air, zinc-carbon, zinc-chloride, CR/SR/LR (button batteries)

### Primary/Single-Use

Primary/Single-Use batteries cannot be recharged and must be disposed of once they wear out. Alkaline, lithium, silver oxide, zinc-air, zinc-carbon, and zinc-chloride are all types of primary batteries.

**Products that may use or contain primary/single-use batteries:**

Flashlights



Clocks & Watches



Smoke Detectors



Remote Controls



Toys



### Li-Ion



**Type:** Rechargeable  
**Name on battery:** Li-Ion  
**Seal color:** Blue 

### Lithium Ion

Has excellent performance in high drain devices, though it can be considered expensive.

**Products that may use or contain Lithium Ion batteries:**

Power Tools



Cellphones



Laptops



Power Banks



Toys





# Battery Chemistries

**Lithium  
Batteries are  
EVERYWHERE!**

## Lithium Metal (Primary)



They **MAY** come in the following sizes: 9v, AA, AAA, C, D, Coin/Button cell

They **MAY** be marked: 'Lithium' or 'Lithium cells'; marked as (CR####)

## Rechargeable (Lithium Ion)



It **MAY** be Marked "Rechargeable"

It **MAY** Have a Battery Chemistry Name (Lithium Ion) or Abbreviation (LI-ION, Li-ion, LiPo (lithium polymer); Button/coin Cell (LIR#####)

It **MAY** Just Have Battery Seal or Other Mark (Or Not)



# Medium Format Batteries

**Medium format batteries are those that are 300–2000 watt-hours, up to 25 pounds**

*Watt-hours (Wh) = Volts (V) × Amp-hours (Ah)*



# Summary



## Covered

- **Portable Batteries**
- **Medium Format Batteries up to 25 lbs. or 2000 watt-hours**
- **Damaged Defective batteries**

## Not Covered

- **Batteries embedded in products (not easily removed)**
- **A battery contained within a medical device, not designed for consumers for personal use**
- **Recalled batteries**
- **Electric Vehicle (EV) Batteries**



# Damaged Defective Batteries



# Thermal Runaway

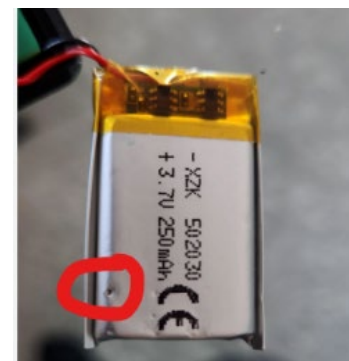
## Thermal Event (Battery Fire)





# Battery Chemistries

**Damaged & Defected batteries must be identified**





# The Battery Network



# About The Battery Network



Non-profit, founded in 1994



30+ years of dedication to safe, responsible battery recycling and environmental stewardship



More than 175 million pounds of batteries collected & recycled since inception

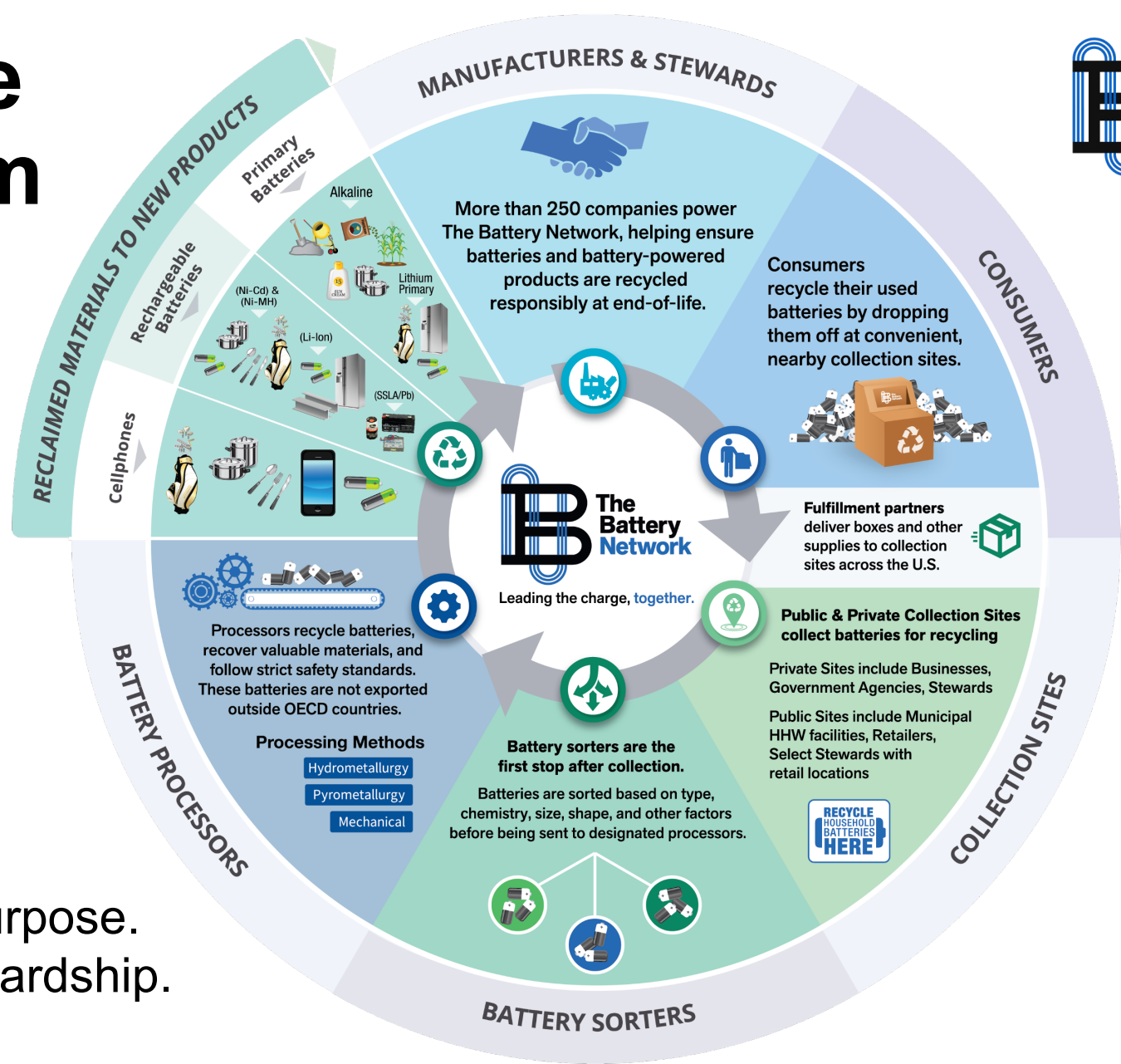


250+ Manufacturers and fee-based services fund The Battery Network Program



80% of the U.S. population has access to at least one of our drop-off locations within 15 miles

# How the Program Works

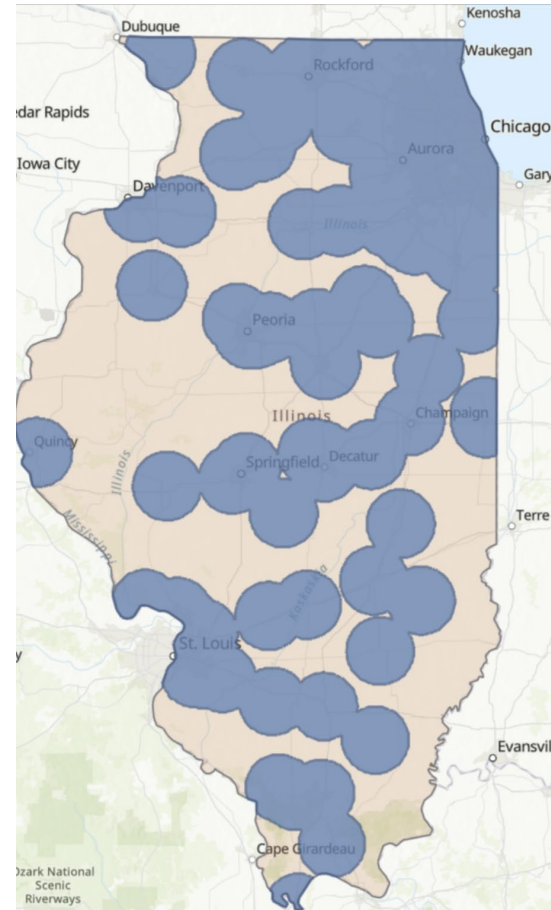
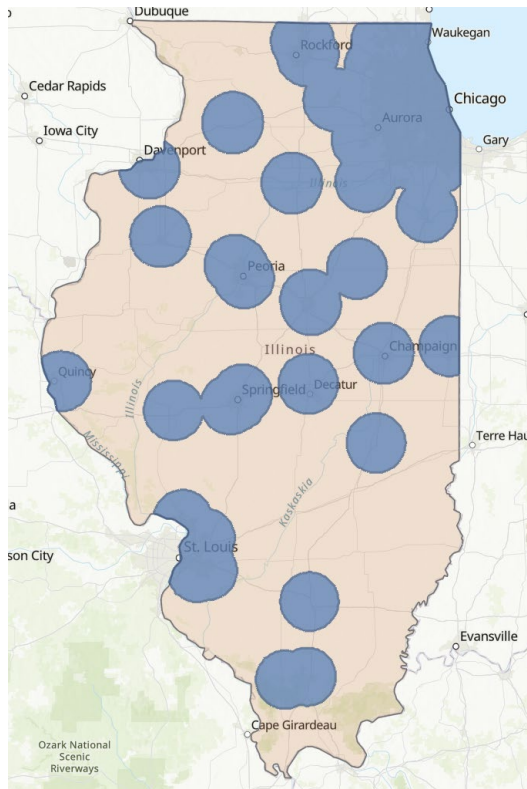


Powered by purpose.  
Driven by stewardship.

# 2025 vs Current Accessibility

**Ended 2025 with 86% of Illinois residents within 15 miles of a drop off site.**

**April 2026: 93.3%**





# Voluntary Program

**2025 Battery collections were 431.8k pounds. ~50K were primary.**

**ILLINOIS HAS RECYCLED 3.6+ MILLION POUNDS OF BATTERIES**

Over the last 10 years, that's equal to:



**100**  
CTA buses



**1** Great Lakes  
barge



**20**  
Boeing 737  
planes



# Collection Solutions



# Recycling Options- Portable Batteries



Nested 2-Kit



Single Large



Single Small

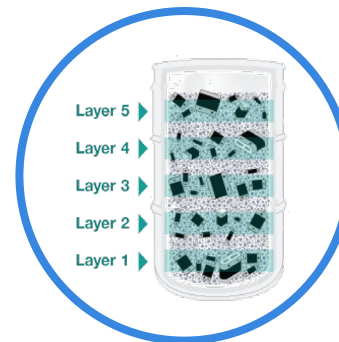
- Patented flame-retardant box liner
- Recycling kit typically holds 25 lbs. (small) or 50 lbs. (large) of mixed batteries
- U.S. DOT Special Permit 14849 that fully complies in transporting hazardous materials
- Pre-paid shipping and recycling



# All-in-One Battery Recycling Solution

## One simple solution for bulk battery prep and transport.

- Safely ship large volumes of single-use and rechargeable batteries—no sorting, bagging, or taping required.
- Built-in terminal protection cushions batteries and prevents short circuits.
- Meets all US DOT requirements—no special training, paperwork, or labeling needed.





# Recycling Options – Medium Format



## High Watt-Hour Lithium Ion Battery Recycling Kit

- Holds up to 4 batteries with an aggregate 3600 Watt-hours
- Up to 26.4 pounds total
- Batteries over 1200 Watt-hours must be no more than 30% charged.



## OneDrum

- Batteries up to 2000 Watt-hours
- Up to 450 pounds total

# Recycling Options – Damaged or Defective



## CellSafe Envelope

- Single li ion battery up to 185 watt-hours



## Small DDR Li-Ion Battery Recycling Pail

- 4.4 lbs of multiple batteries
- 8.8 lbs for a single battery
- Under 300 watt-hours



## Large DD Li-Ion Battery Recycling Pail (5G)

- 4.4 lbs of multiple batteries
- 11 lbs for a single battery
- Under 300 watt-hours

# Become a Collection Partner



- [Illinois Registration Page – The Battery Network](#)

1. Enter business / organization information
2. Enter contact information
3. Once you submit, you'll receive an email with an account number and a link to TRAINING
4. 15 min online for Box / 30 min online for the OneDrum
5. Once you pass the training, you will be able to enter order supplies through our Collection Hub

- [Collection Hub](#)

1. Add additional contacts
2. Access Training
3. Order Supplies

Certificate for the Box is good for one year, then training must be repeated.

Certificate for the OneDrum is good for three years, then training must be repeated.

# Goal: Supply One Site per Community



## OneDrum

- Non-damaged Batteries up to 2000 Watt-hours
- Up to 450 pounds total



## Battery Box

- Lithium Terminals Taped or Bagged
- 4.4 lbs of multiple batteries
- 8.8 lbs for a single battery
- Under 300 watt-hours



## Large DD Battery Recycling Pail (5G)

- 4.4 lbs of multiple batteries
- 11 lbs for a single battery
- Under 300 watt-hours



# Illinois State Locator

- [Locator](#) has been revamped we are continuing to update it.
- Filters are limited to batteries in the program
  - Rechargeable
  - Primary
  - Medium Format
  - Damaged or Defective
- **Locations do not cross state lines**
- Adding comment line under telephone number and can link to your local website

The screenshot displays the Illinois State Locator interface. At the top, there are two tabs: 'Rechargeable Battery' (selected) and 'Primary (Single-use) Battery'. Below the tabs, there are buttons for 'Get Directions' and 'About this Location'. The main content area shows the location 'Kane County - St. Charles' with the address '540 S. Randall Rd, St. Charles, IL 60174' and the phone number '224-230-7926'. A red arrow points to the phone number. Below the phone number, there are buttons for 'Rechargeable Battery', 'Primary (Single-use) Battery', 'Cellphones', 'Medium Format Battery', and 'Damaged/Defective Battery'. At the bottom, there are buttons for 'Get Directions' and 'About this Location'. To the right of the text is a map showing the location in Kane County, Illinois, with labels for Sycamore, Virgil, Kaneville, and Troxel.



# Safety Guidance

We have developed clear, consistent public guidance on safe battery storage, aggregation, and handling **prior to drop-off**.

## Option A

Individually bag each battery

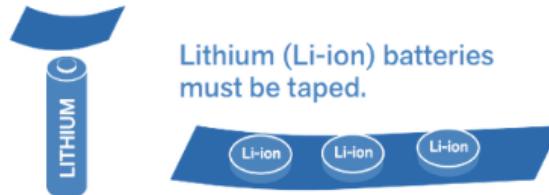


Use a clear bag such as:

- The Battery Network-provided bags
- Zip-seal bags
- Produce or newspaper bags
- Bubble-wrap bags (**required for all soft-sided batteries**)

## Option B

Tape the terminals



Lithium (Li-ion) batteries must be taped.

Cover the terminals with either:

- Clear packing tape
- Electrical tape
- Duct tape

**No masking, painters, or Scotch tape!**

If using non-clear tape, keep the battery brand and chemistry type visible.

# Safety Guidance



1. [Safety – The Battery Network](#)
2. Corroded or leaking Alkaline Batteries are not considered hazardous and are accepted in our Box and OneDrum.
3. Currently we recommend that any battery experiencing thermal runaway be subdued with sand or kitty litter and remain inactive for 7 days before being moved.
4. The Damaged/Defective 5-gal pail may be used for rechargeable batteries that have been punctured, become puffy or have rested for 7 days after a thermal runaway event.
5. We are clarifying protocols for damaged batteries, including differentiation between non-emergent conditions and active failure scenarios, and appropriate escalation and response.





Effective January 1, 2026, Illinois implemented its Portable & Medium Format Battery Stewardship Act, making it the 16th state in the U.S. to pass a battery extended producer responsibility (EPR) law.

Illinois has joined The Battery Network mission: powered by purpose, driven by stewardship! As of this year the laws have changed so all obligated producers must participate in an approved battery stewardship plan. What this means for Illinoisans: you can trust your batteries are being safely recovered!



Learn more at <https://batterynetwork.org/stewards/state-recycling-laws/illinois/>

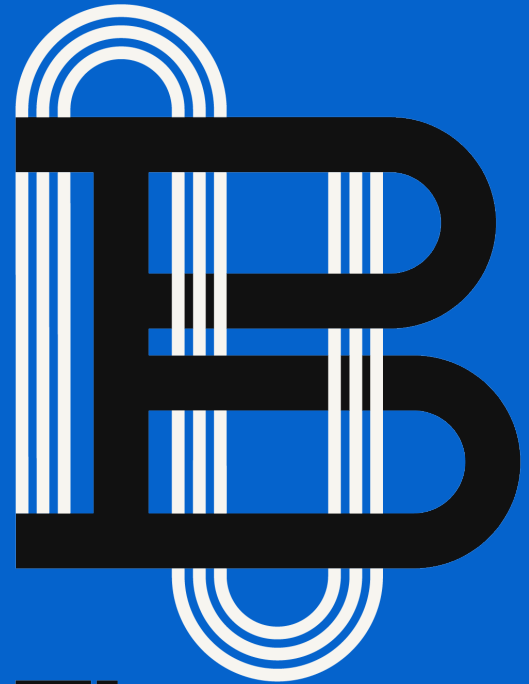
# Q & A

Do you have any questions?



# Thank You

Marta Keane, Regional State Stewardship Manager  
[Mkeane@batterynetwork.org](mailto:Mkeane@batterynetwork.org)



**The  
Battery  
Network**